



*Jordan fishwick*

Stoneheads Rise Whaley Bridge High Peak

## Stoneheads Rise Whaley Bridge High Peak SK23 7RU

£675,000



### The Property

Occupying an enviable position on a quiet cul-de-sac within an established, popular development in Whaley Bridge, boasting open views and adjoining an open green, a generous five bedroom detached family home. Superbly presented throughout, offering versatile, spacious accommodation with immaculate gardens, a tremendous size driveway and an integral double garage. Ready to walk into, this executive detached property comprises: entrance hall with storm porch, wc, 21ft living room with bay, 20ft L shaped living dining kitchen, five first floor bedrooms (smallest 13'0 x 8'0) an ensuite, dressing and family bathroom. Viewing highly recommended.



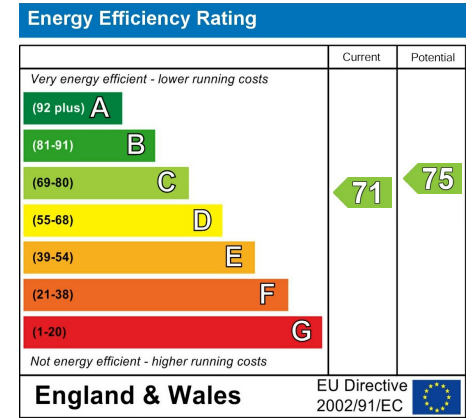
- Popular Cul-de-sac Position
- Spacious Detached Executive Family Home
- Five Spacious Bedrooms
- Beautiful, Well Maintained Gardens
- Stunning Views Over Whaley Bridge
- Integral Double Garage
- Ample Driveway Parking
- 21ft Bay Front Living Room
- Open Plan Breakfast Kitchen with Dining Area
- Immaculately Presented Throughout

**Postcode** SK23 7RU

**EPC Rating** C

**Local Authority** High Peak

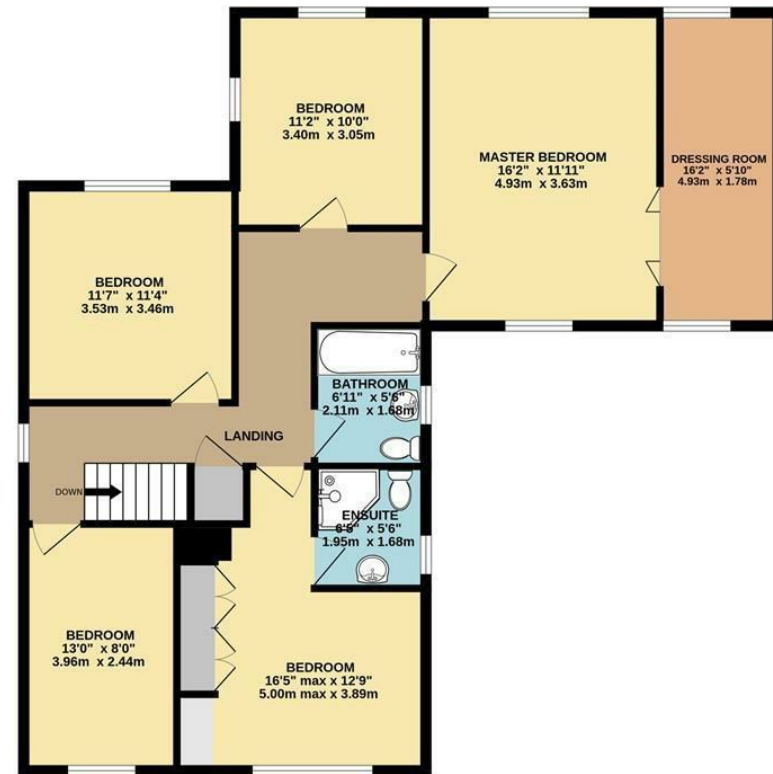
**Council Tax** E



GROUND FLOOR



1ST FLOOR



Whilst every attempt has been made to ensure the accuracy of the floorplan contained here, measurements of doors, windows, rooms and any other items are approximate and no responsibility is taken for any error, omission or mis-statement. This plan is for illustrative purposes only and should be used as such by any prospective purchaser. The services, systems and appliances shown have not been tested and no guarantee as to their operability or efficiency can be given.  
 Made with Metropix ©2025



These particulars are believed to be accurate but they are not guaranteed and do not form a contract. Neither Jordan Fishwick nor the vendor or lessor accept any responsibility in respect of these particulars, which are not intended to be statements or representations of fact and any intending purchaser or lessee must satisfy himself by inspection or otherwise as to the correctness of each of the statements contained in these particulars. Any floorplans on this brochure are for illustrative purposes only and are not necessarily to scale.

Offices at: Chorlton, Didsbury, Disley, Hale, Glossop, Macclesfield, Manchester Deansgate, Manchester Whitworth Street, New Mills, Sale, Wilmslow and Withington

14 Market St, Disley, Cheshire, Stockport SK12 2AA

01663 767878

disley@jordanfishwick.co.uk

www.jordanfishwick.co.uk